
New Community Plan - Developing The Evidence Base & Needs Analysis

1. SUMMARY

- 1.1** The current Community Plan / SOA will end in March 2013. This paper sets out the initial stages required for the development of the next Community Plan / SOA.

2. RECOMMENDATIONS

- 2.1** The Management Committee approves the approach to establishing the evidence base and needs analysis for the new community plan as outlined in this report.
- 2.2** The Management Committee approves deadline for returning the initial evidence gathering forms.
- 2.3** The Management Committee approves the approach to analysis of the current community plan/SOA and national outcomes and agrees that thematic leads/partners support this exercise.

3. DETAIL

Introduction

- 3.1** As part of developing the new community plan it is proposed to undertake a needs analysis and establish a sound evidence base. This is essential in order that there is a clear rationale for the outcomes and priorities included in the new community plan. It is proposed to take this forward in 2 ways:
- A survey of partners.
 - Analysis of current community plan/SOA and national outcomes.
- 3.2** The information gathered from both the partner survey and analysis of current community plan/SOA and national outcomes will be analysed and refined into an overall evidence base with draft options for consideration by the CPP. Approval will be sought at the October Management Committee to put options out for consultation.
- 3.3** Timetable

Collect information on national outcomes	August / September
Data analysis – A&B evidence base	August / September
Collect information on partner plans / parent plans	August / September
Survey partners for their views and evidence to support them (Deadline for returns 22 nd September)	September
Develop and draft engagement and consultation approach and materials	September
Approval of evidence base	October
Draft options for Community Plan / SOA	October
Approval of draft options for consultation / engagement	October / November
Engagement and consultation on evidence base, issues/options for Community Plan / SOA	December / January
Review / consideration of feedback from consultation / engagement	February
Prepare draft of revised Community Plan / SOA	February / March
Approval of revised Community Plan / SOA	March

- 3.4** Proposals for the consultation and engagement activities will also be submitted for approval at the October Management Committee.

Survey of Partners

- 3.5** The purpose of the paper based evidence gathering exercise is to begin to define what the priorities for the Argyll and Bute Community Planning Partnership will be for the next Community Plan / SOA.
- 3.6** The information will initially be gathered under 5 broad headings.
- Children and young people
 - Health and social care
 - Housing and regeneration
 - Community safety
 - Economic development
- These heading are to enable us to gather and manage the information they do not represent any agreed final themes. Once all the information is gathered and analysed there will be further consultation on what the key themes for the new plan should be.
- 3.7** Each form asks for partners to provide opinions on what they believe to be priority issues and key factors relating to the 5 broad headings.
- 3.8** Partners are also asked to provide evidence to support their views. Evidence can be from a number of sources including official

statistics, currently collected local success measures or additional information provided by partners which may be quantitative or qualitative.

- 3.9** The paper based evidence gathering exercise will commence on approval from the Management Committee. All partners will be emailed the forms and asked to return by the agreed deadline.
- 3.10** Argyll and Bute Councils' Improvement and Organisational Development team will analysis of information and report back to Management Committee in October.

Analysis of current community plan/SOA and national outcomes

- 3.11** The approach taken to progress the development of the new community plan / SOA in conjunction with evidenced-based needs is outlined in Appendix 1. This work has already commenced and Appendix 1 also indicates the progress made as of 31 July 2012.
- 3.12** Content from the current SOA has been extracted and entered into an Access database to facilitate analysis. The success measures have been related to the Scottish Government's National Outcomes on the basis of:
 - How the plan relates its themes (Economy; Environment; Social Affairs; Third Sector and Communities) to the Scottish Government's National Outcomes.
 - A desktop exercise that has related the individual success measures in the SOA / Community Plan to the most relevant National Outcomes. This has been carried out independently of the relationships described in the plan.
- 3.13** By relating the success measures in the current SOA to the National Outcomes, this has allows us to :
 - Identify areas where data is already collected to supplement a high level needs analysis, using the common framework of the Scottish Government's National Outcomes. This directly contributes to the needs analysis that will influence the development of the next community plan / SOA.
 - Identify mismatches between the contents of the SOA and the National Outcomes. These mismatches may have occurred because:
 - A National Outcome is not represented in the current SOA at all
 - Indicators / success measures may not directly match to any of the National Outcomes
 - Indicators / success measures may relate to National Outcomes with which they have not been associated in the current plan.

- 3.14** The identification of mismatches as described above is coincidental to the needs analysis. However, it is a useful, and complementary, exercise as it allows a 'sense check' of the content of the current SOA, and provides a starting point for discussion about new indicators.
- 3.15** In parallel to this current work, the initial phase of the needs analysis has been carried out. This involved reviewing the Menu of Local Indicators, and putting together data and commentary on a National Outcome-by-National Outcome basis. A commentary against the individual indicators has been prepared to suggest how Argyll and Bute compares with Scottish averages.
- 3.16** The next steps in carrying out the needs analysis are to:
- Provide an overview for each National Outcome, on the basis of the Menu of Local Outcome Indicator data. This will be a higher level commentary than that provided on an indicator-by-indicator basis
 - Decide which of the Menu indicators provide useful information about Argyll and Bute with a view to discarding those which appear to be superfluous.
 - Use the current work to:
 - integrate the Argyll and Bute success measures for which data is already collected into the needs analysis, adding these to the information profiles based on the Menu of Local Outcome Indicators.
 - Enable consideration of how these additional indicators, and our associated performance, suggest areas of greatest need / priorities for action. This will directly link needs analysis to performance management, highlighting priority areas with low levels of performance over low priority areas or high priority areas with high levels of performance.
- 3.17** As part of the agreement of needs and priorities, feedback will be needed from leaders of thematic groups / partners on:
- Whether the analysis has accurately captured the relevance of the current success measures to the National Outcomes
 - Whether the priorities identified on the basis of need are those that have been identified through other channels (e.g. via consultation with partners).
- 3.18** Once complete this stage will be reviewed and considered along with the survey of partners.

4. CONCLUSION

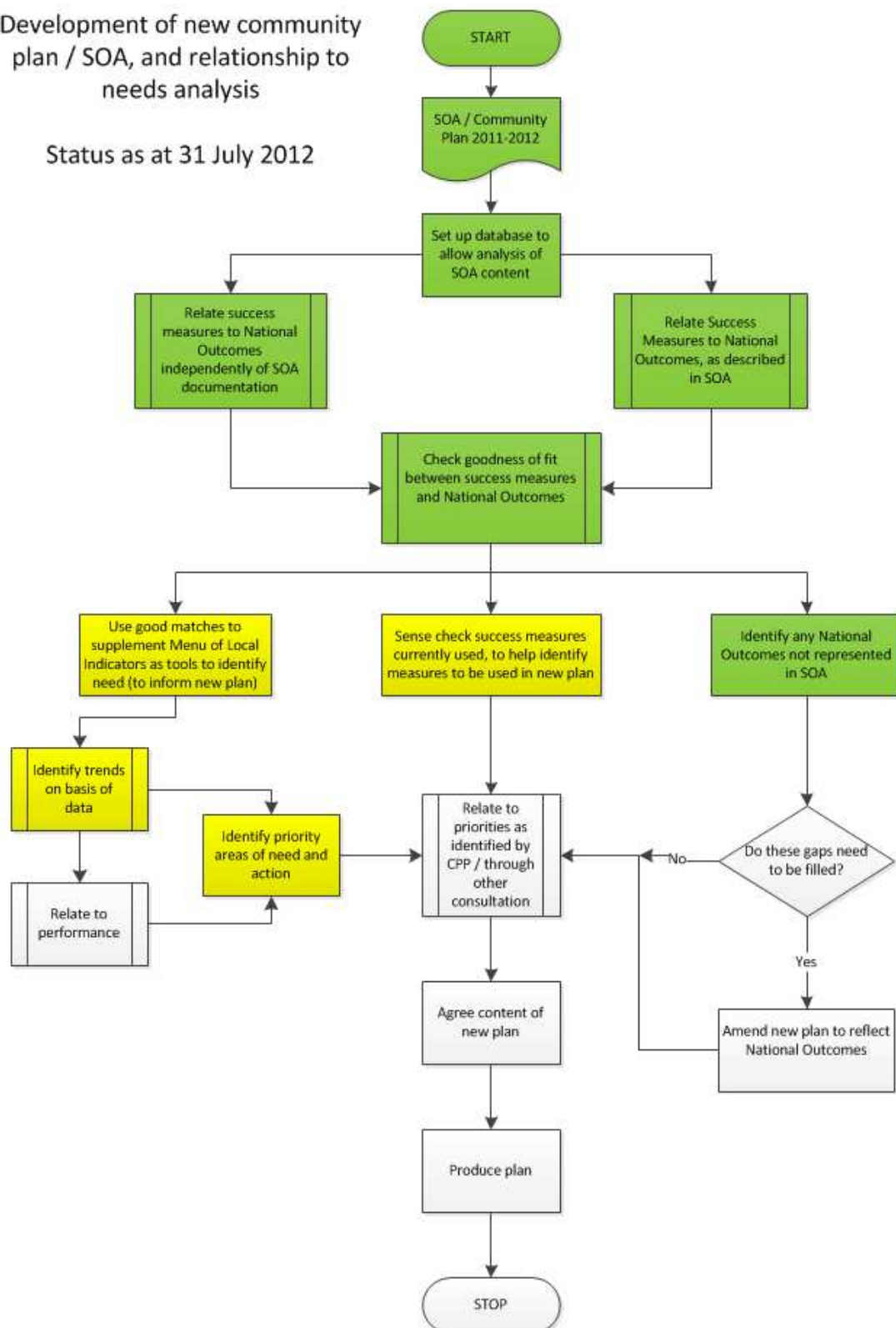
- 4.1** This approach is designed to enable us to gather information from all partners over a short period of time. The timeline above will be challenging but if adhered to will result in the new Community Plan / SOA being in place for the beginning of April 2013.

For further information contact: Eileen Wilson
Eileen.wilson@argyll-bute.gov.uk
Chris Carr
Chris.carr@Argyll-bute.gov.uk

Telephone Eileen 01436 658726
Chris 01546 604260

Development of new community plan / SOA, and relationship to needs analysis

Status as at 31 July 2012



Key

